



# Tech-Xpo 2019

Paintworks, Bristol  
**18th June 2019**



**Pitching**



**Looking for investment**



# Welcome to the SETsquared Tech-Xpo 2019, 18th June

Thank you for joining us at Paintworks this evening for a showcase of some of the best and most disruptive technology ventures from the Global #1 University Business Incubator in 2019. Tech-Xpo would not be possible without the generous contributions of our sponsors so I'd like to extend my thanks to VWV, EY, Research and Enterprise Development University of Bristol, and Corrigan Accountants for their support.

In this brochure you will learn more about the companies exhibiting their technology and those taking part in our pitching competition tonight. We invite you to try out some demos, have conversations and make connections, as well as to vote for your favourite pitch in the competition:

**Visit: [sli.do](https://sli.do) join the event with code xpo19**

Bristol's Tech ecosystem owes its success to the generosity and collaborative approach from those who play a part in it. That's you, so thank you for attending tonight and we hope you have a fantastic time.

Enjoy Tech-Xpo 2019!

**Monika Radclyffe**

Centre Director, SETsquared Bristol

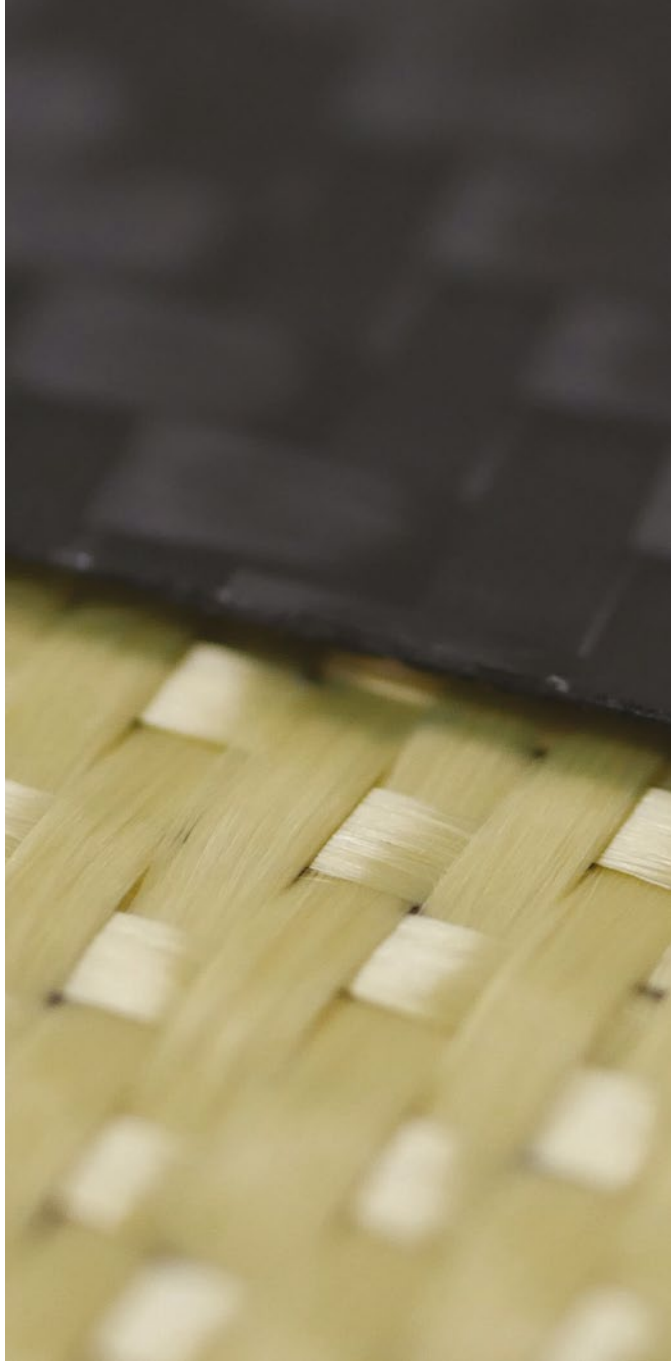
<b>6.00 pm</b>	Welcome drinks, exhibition and networking
<b>6.45 pm</b>	Welcome speech, Monika Radclyffe, SETsquared Director, sponsor speeches
<b>7.00 pm</b>	Elevator Pitch Competition
<b>7.15 pm</b>	Audience voting: visit <a href="https://sli.do">sli.do</a> , join the event with code <b>xpo19</b> to vote
<b>7.20 pm</b>	Best Elevator Pitch award presented by VWV
<b>7.30 pm</b>	Closing remarks, Lucinda Parr, Registrar, University of Bristol, followed by networking
<b>8.30 pm</b>	Close - you are welcome to join us for informal drinks upstairs in Bocabar



**Across all mechanised industries, pistons are used to make machines move. They open the doors on buses, operate the control surfaces on planes and manoeuvre sub-sea pipelines. Despite widespread use, these pistons come with two major weaknesses.**

Firstly, they do not survive in extreme environments. Their metal components corrode, and foreign materials are forced past their sliding surfaces. By solving this problem, there are billions of pounds to be saved each year in extreme applications across the marine, oil and gas and mining industries. Secondly, while high-pressure hydraulic pistons remain the lightest option for performance applications (i.e. aerospace), there are significant opportunities to reduce mass by challenging and reworking what is a centuries-old design. The team at Actuation Lab drew upon their experience in advanced aerospace design to invent a revolutionary technology which can both survive in extreme environments and has 1/3 the mass of the equivalent hydraulic piston. This fully sealed actuator, with no sliding surfaces, is made entirely from non-corrosive composite materials. Actuation Lab is here to showcase its technology publicly for the first time. We are looking to establish contacts in industries who are interested in working with us to advance the way the World's machines move and survive.

 [www.actuationlab.com](http://www.actuationlab.com)







**Agilebase is a cloud based platform that offers everything you need to rapidly create enterprise-class software, tailored to fit a business.**

As a company we have used it ourselves to build our 'off the shelf' software for food manufacturers but customers have also built apps to manage the entirety of their businesses. At our stand we will demo a large system built by a customer with business experience but no technical background whatsoever. Customers also have the option to blend off the shelf and self-built with an innovative 'hybrid' model. Building is fast, friendly and flexible with no coding skills necessary.

 [www.agilebase.co.uk](http://www.agilebase.co.uk)



**AutonoMe is a virtual support provider designed to improve the lives of people with learning disabilities.**

Our GovTech innovation helps Local Authorities provide 24/7 support whilst delivering outcomes that measure progression across individuals and cohorts.

AutonoMe currently supports over 270 users across 7 Local Authorities in the South West. We're now expanding our service across the UK after recently onboarding Surrey Council and becoming a Venture Partner to EY London Ventures GovTech initiative.

AutonoMe is seeking introductions to Local Authorities and companies/individuals working in the Learning Disability/Social Care Sector.

 [www.autono.me.uk](http://www.autono.me.uk)





**Launched in 2012, the Bristol Pound (£B) is the UK's largest local currency. It aims to create a more resilient and sustainable independent business sector in Bristol, and in turn, a more inclusive local economy.**

It does this by keeping the money spent in Bristol Pounds in Bristol, helping to develop a local circular economy. The £B comes in both paper and electronic versions, and offers a phone app with a map to help people discover and support Bristol's independent businesses.

We have recently launched our new strategy which will see us develop a range of services for SMEs to help them to grow and develop. We will also be developing the digital currency so that it better meets the needs of our members and strategic partners, and enables a data-driven approach to our ongoing development. Our third area of focus is to increase engagement right across the city, thanks to our Community and Business Champions. At this point, we are seeking funding to help us implement these programmes. We have the potential to create a model for local currencies that can be copied by cities and regions across the UK and beyond.

 [www.bristolpound.org](http://www.bristolpound.org)



**As well as offering security consultancy and evaluation services to major global corporations, we are developing a full security-as-a-service solution based on our existing experience.**

This is rooted in custom hardware and this work is currently self-funded and at the FPGA prototype stage.

Manufacturers do not see security as a core business, but as a necessity. By offering this complete solution we remove the need for in-house specialist expertise and significant impact to product development and production. This solution facilitates the ongoing secure updates and communications necessary for IoT products.

 [www.cerberus-laboratories.com](http://www.cerberus-laboratories.com)







We help to digitise processes and work flows through easily and rapidly creating mobile apps. The result is a significant time-to-value advantage for customers across multiple industry sectors and technology paradigms.

The integration to real world backend systems is innovatively architected in an agnostic manner: FloFrame connects via re-useable software building blocks to technologies such as enterprise systems from leading vendors (i.e. IBM, SAP, Microsoft etc) IoT, Blockchain, Augmented Reality (AR) and Artificial intelligence (AI).

Using other frameworks and tools, apps often take months to build, FloFrame enables apps to be delivered in days/weeks to a very high level of sophistication and performance. Our product is very visually intuitive and user friendly, with the ability to use native features such as a camera, barcode scanner or fingerprint reader, offering a more frictionless user interface and experience.

9



## We're a data lab - we help businesses to make or save money using data.

Launched in 2017, we're a successful data agency working with big global clients, SMEs and start-ups.

We're launching BizBoard - the SME business dashboard.

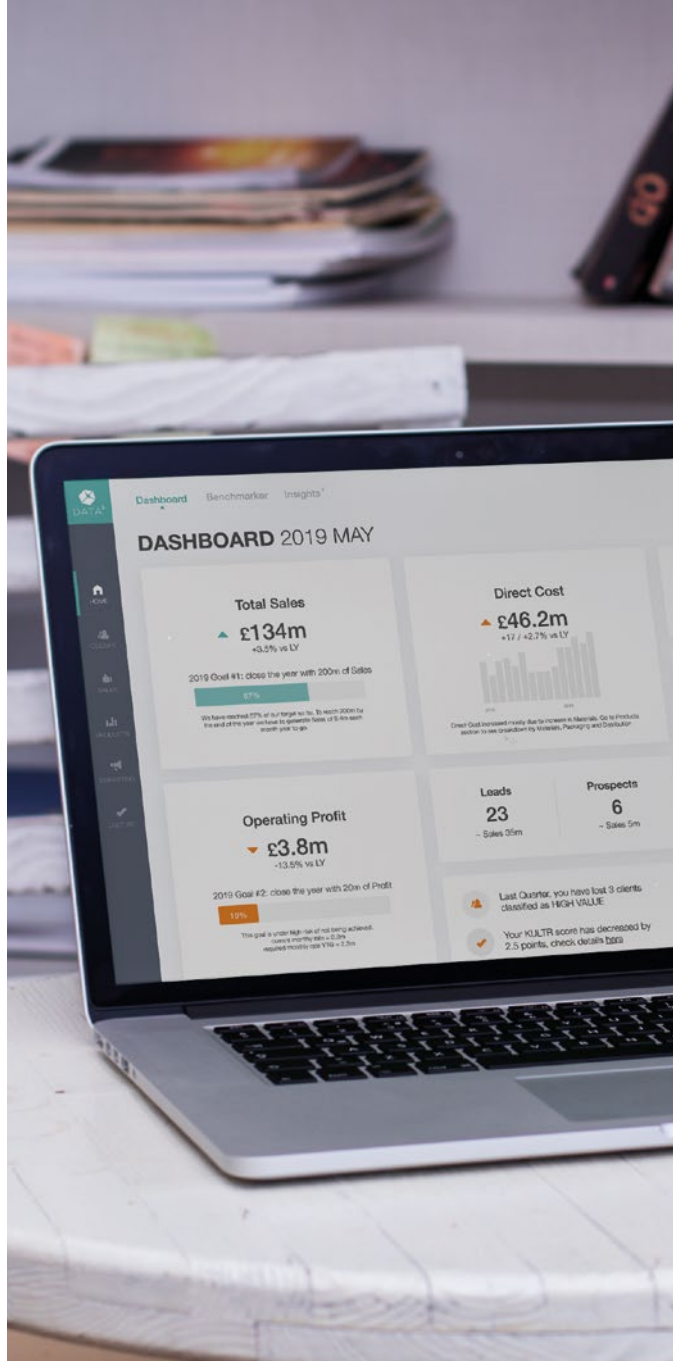
BizBoard enables SMEs to:

1. see all their data in one place
2. see how they compare to other businesses
3. identify how they can make or save money

Come see our data tool in action.

Come see BizBoard in action. We're targeting 25m global SME businesses and the \$225bn global data market. Join us.

 [www.data-cubed.co.uk](http://www.data-cubed.co.uk)





# ELEM

THE VIRTUAL  
HUMANS FACTORY



## **Improving outcomes for patients with “Virtual Humans”.**

A Barcelona Supercomputer Center spin-off, ELEM's medical modelling technologies generate unparalleled knowledge and medical insights for the biomedical and health industries to predict treatment outcomes and improve human health.

Our Virtual Humans and bio-simulation software, Alya Red, allow thousands of in-silico medical experiments to predict multiple patient responses before human testing. It reduces the scope for widely inconclusive animal testing, and tapers any real patient trial.

Using ELEM's Virtual Humans solutions, our clients develop better treatments, medical devices or drugs, faster; for improved outcomes for patients whilst reducing business and patient risks.

 [www.elem.bio](http://www.elem.bio)



## Decision-Analytics: Teaching technology to think like you.

Fluence's powerful software analyses the mass of content that passes through an organisation to reveal how important decisions are made. Our prediction algorithms allow clients to automatically assess the quality of future decisions based on the collective expertise of their workforce.

We call this 'hybrid decision-making' where the best parts of human intuition are combined with the speed and reliability of software.

- Fluence helps the world's leading organisations to:
- Increase employee productivity
- Automate quality assurance
- Enhance customer engagement

The co-founders are keen to meet with investors interested in their next funding round. We'd also like to speak to strategic data partners in Finance, Publishing, or Professional Services.

 [www.fluence.world](http://www.fluence.world)







**Interactive Scientific (iSci) is driven by the vision of enhancing scientific collaboration and communication by making the invisible visible.**

iSci have developed a molecular innovation platform for Science-Led enterprise, targeting executives, research scientists and computational chemists who need to collaborate and communicate scientific data at speed and with ease.

Using interactive simulations the iSci platform provides context to biological, chemical and material molecular experimentation. Drawing on cutting-edge scientific research, iSci uncovers and analyses the insights buried in unstructured data, just as human brains do. Prominent academic institutions have validated the technology.

The iSci platform, [research.nanosimbox.io](https://research.nanosimbox.io), was launched in early 2019; it allows researchers to visualise molecules using VR technology. iSci will be closing a Series A investment round late 2019/early 2020 and are taking early-stage meetings with interested parties.

In addition to collaborating with science-led enterprise, the iSci team are passionate about engaging the next generation through education products: [learn.nanosimbox.io](https://learn.nanosimbox.io).

 [www.interactivescientific.com](https://www.interactivescientific.com)



**iXport is a technology company which produces a turnkey solution to enable SME's to export globally.**

We provide an easy to use e-commerce trading platform specifically designed for exporting which includes technology to provide real-time freight, forex and export documentation quotes, as well as container and packing algorithms simplifying these tedious and time-consuming tasks.

In 2018, over 230K UK SME companies were exporting but one of the main reasons this number is low can be attributed to the amount of effort and skills that is required to export. Typically, an export order takes days or even weeks to compile and complete. Our system allows this process to happen in minutes 24 x 7. In a £600B UK export market, iXport can help both existing and new exporting companies simplify the process and make exporting easy.

 [www.ixport.com](http://www.ixport.com)



WHAT WOULD YOU...

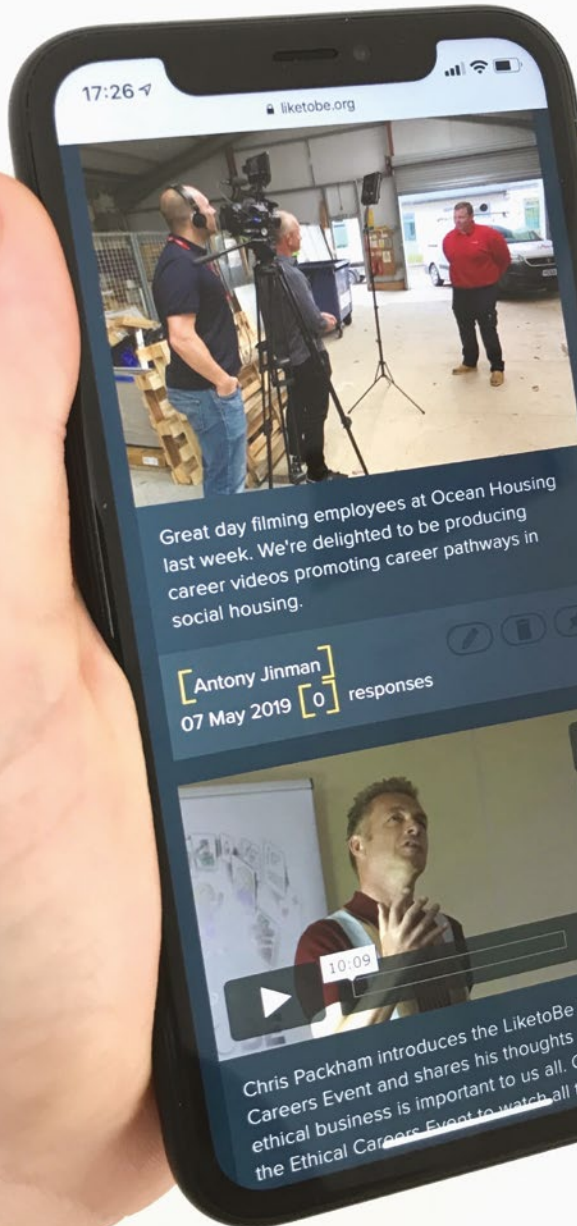
**LIKETOBE** [ ]

£

**LiketoBe is the social learning platform for young people to achieve their career aspirations.**

We provide a digital outreach service, which includes media production for employers, enabling them to connect more efficiently and more regularly with a national online network of students. In addition, we also host high profile online career events, which includes celebrity speakers from across business and industry. These events help us recruit employers and schools to our platform, of which our target market is 10,500 large employers and 748 academy trusts. We are currently looking for £250k of investment to scale our marketing and sales team.

🌐 [www.liketobe.org](http://www.liketobe.org)







**Maths with Parents is an online platform that helps parents and children to love learning maths together at home.**

Maths with Parents works with primary schools to create a tailored package of support for the parents and children in every class. Every fortnight parents receive updates about what their child is currently learning, a short video in which kids explain how the maths is taught and fun activities to play together about this topic.

Having already scaled rapidly into over 90 schools, we are now growing with the aim of supporting tens of thousands of parents in hundreds of schools across the UK. We are looking to meet anyone who could help to introduce us to more schools, as there are 18,000 primaries in the UK that we've not yet spoken to!

 [www.mathswithparents.com](http://www.mathswithparents.com)







Play



## OKKO HEALTH

**OKKO Health is a med tech start-up with an aim of protecting eyesight by giving individuals the change to self-monitor from their smartphone.**

It was set up by eye specialists, bringing together creative technologists, vision scientists and commercial experts for the first time.

Our developing smartphone technology will allow individuals to self-monitor their vision safely away from clinics, in order to catch any eye problems at the earliest possible opportunity.

We use optically-designed video games to capture data about visual health, by how the individual interacts with the tablet or smartphone. Our 'big data' approach will allow us to use AI to look for patterns in eye disease that have not yet been noticed.

Not only will OKKO's system save money and time for hospitals, but serves as a technology to globally address the growing gap between the demand for specialist eye care and supply of doctors available to meet it.

We're raising the last £200k of our £500k seed raise at present, and are keen to meet investors or partners who share our passion.

 [www.okkohealth.com](http://www.okkohealth.com)



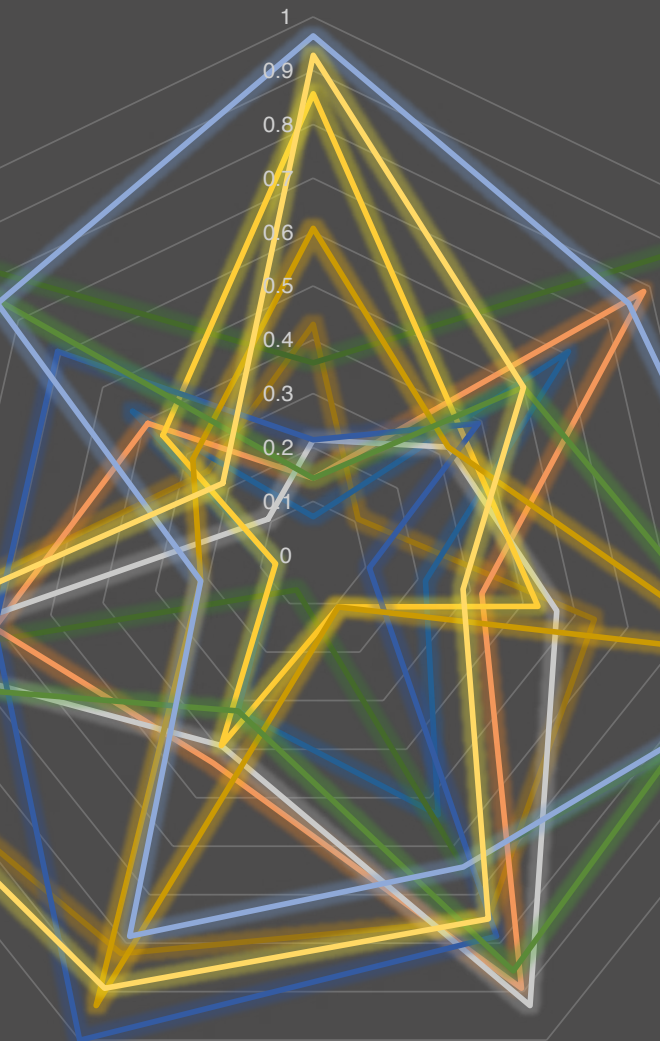
**OptiFit is developing technology to detect heart rate and other vital signs using a standard camera for the fitness industry.**

Using a camera integrated into cardio equipment users can monitor their heart rate without the need to hold onto the traditional grip sensors, allowing for complete freedom of movement. The technology can also be implemented into fitness apps allowing all users to monitor their heart rate during the exercise, providing valuable feedback to the app developer in terms of an individuals fitness level, how every user reacts to a given workout, and even interactively adapting a workout depending on a user's exertion. We are looking for both investment and potential partners to begin trialling this technology at a number of gyms.

 [www.optifit.co](http://www.optifit.co)



## Arithmetic Reasoning



**Resumes are Dead. Sigma Polaris' software enables companies to eliminate CVs, establishing a more accurate and effective hiring process whilst removing bias and championing true diversity and meritocracy.**

Providing HR talent assessment & pre-employment support software designed to optimise, deliver, and analyse immediate and future hiring decisions across enterprises of all sizes.

Through automating the application process with machine learning and next-gen online assessments, the platform can profile candidates on both Soft and Hard skills to generate insightful non-biased candidate-shortlists from simple vacancy-fit analysis without factoring in gender, sex, age, religion, ethnicity, or other elements which might directly/indirectly lead to discrimination.

A national recruiter stated: Sigma Polaris allowed them to actively find the best candidates faster, match them to the most suitable positions and then use the results all the way up the hiring chain.

 [www.sigmapolaris.com](http://www.sigmapolaris.com)



## TableTiger is an innovation for the restaurant industry which empowers restaurants to transform their customers' experience.

Developed by a team with deep industry knowledge, TableTiger deploys leading edge technology in unattended bill payments. Restaurant customers engage with a quick, secure and convenient transaction. They split bills, calculate a tip and pay at the table with no staff involvement.

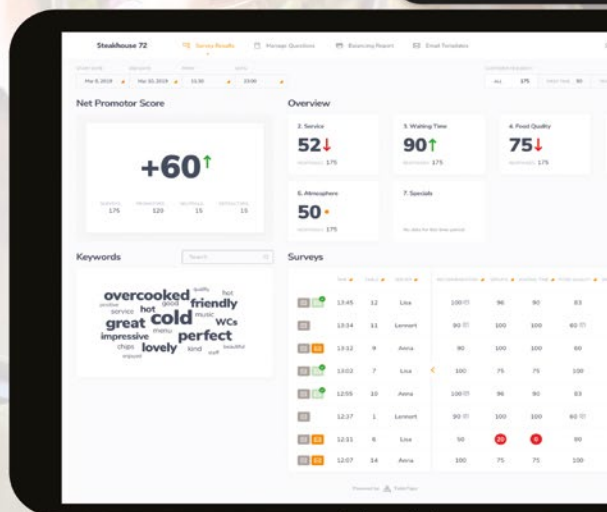
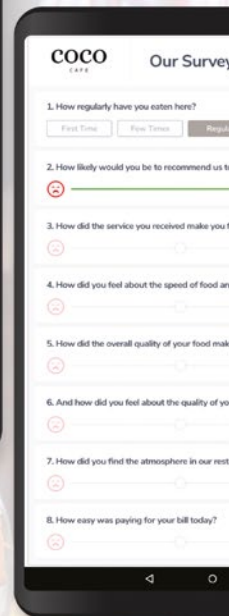
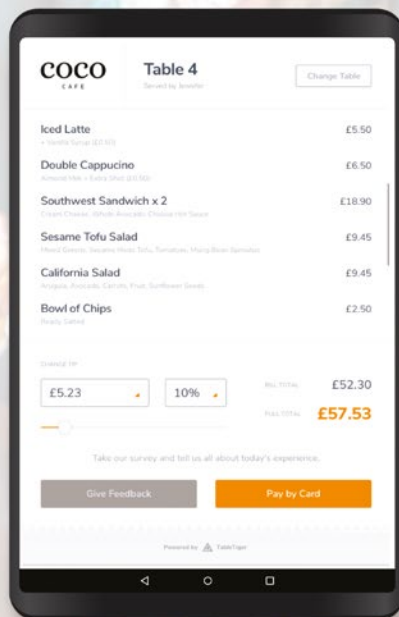
Flowing to a one page survey, the TableTiger device extracts value from this previously underperforming interaction by capturing real-time, actionable customer data.

The data driven by TableTiger's customisable survey questions is as mission critical as traditional financial information and empowers a deeper customer relationship. Operationally it measures quality, facilitates better and faster decision making and assesses management and staff. It enables rapid service recovery and positively influences Tripadvisor and other review sites.

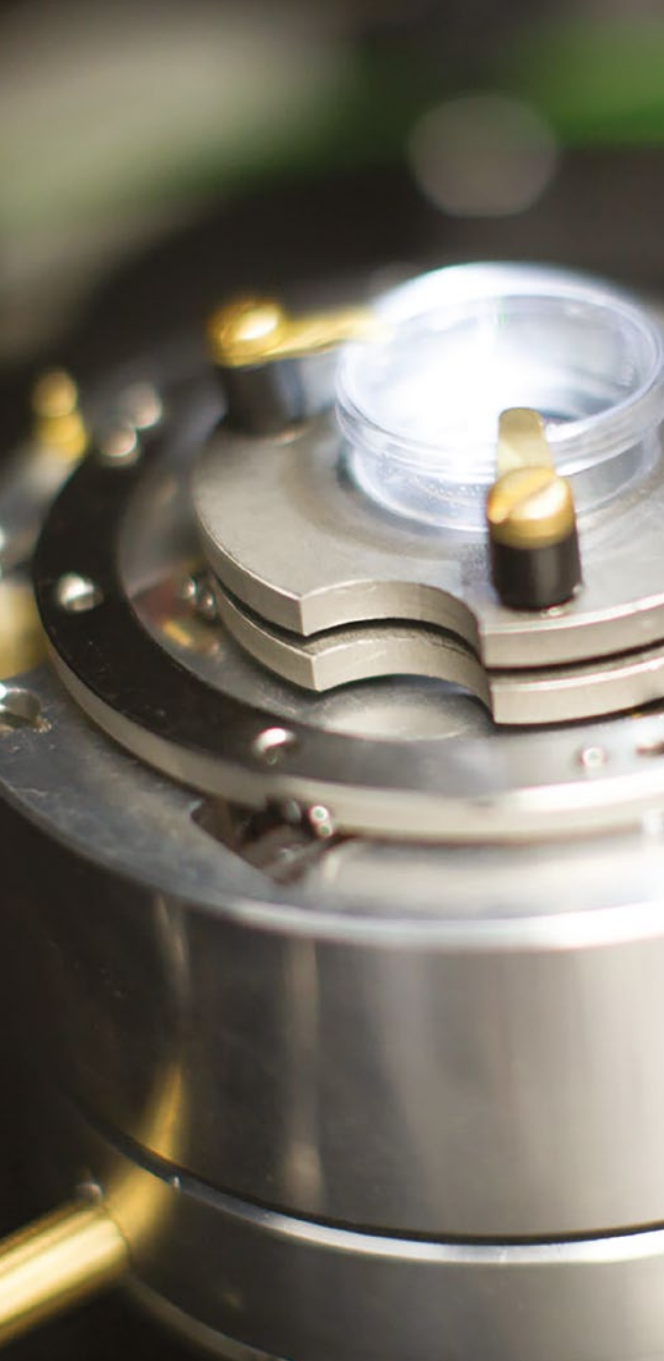
The 32,000 full service UK restaurants are the first target market followed by the 640,000 in the USA.

Join us at our table to see TableTiger in action.

 [www.table-tiger.com](http://www.table-tiger.com)







Vitamica



**Vitamica have developed and patented an optical technology that quickly informs prescribers whether an antibiotic will be effective against a bacterial infection.**

This is of vital importance as antibiotic resistance has made many infections untreatable, emphasising the importance of appropriate antibiotic selection.

Current tests to determine antibiotic effectiveness take a minimum of 36 hours. Thanks to our unique, patented technology, developed at the University of Bristol, Vitamica's test takes less than 1 hour.

This means prescribers will have the information to rapidly prescribe effective treatments, ultimately leading to improved patient outcomes. Furthermore, by reducing the use of inappropriate antibiotics, we hope to slow the spread of antimicrobial resistance.

It is increasingly recognised by both governments and global health organisations that there is an urgent need for improved diagnostics within the healthcare sector. As such, the value of the market is rapidly growing as the potential to save lives becomes more apparent.

We have demonstrated proof of principle of our technology with clinical samples. We are now seeking investment and partners to accelerate our path to market. The time is right for our technology to transform antibiotic prescribing, both for better treatment and to safeguard the future of antibiotics.



[www.vitamica.co.uk](http://www.vitamica.co.uk)

# SETsquared Tech-Xpo 2019 is kindly sponsored by:



VWV is a Bristol-based law firm with 430 staff, including 80 partners, working across its Bristol, London, Watford and Birmingham offices. The firm's award-winning Technology sector practice specialises in advising tech start-ups and scale-ups on angel and venture capital fundraising, IP protection, data protection, employment, immigration, property, tax and other commercial work. The firm has provided the weekly "lawyer-in-residence" service at SETsquared Bristol since October 2009 and provides similar in-residence support to SETsquared Bath, Unit DX and Future Space.

 [www.vwv.co.uk/law-sector/  
technology-law](http://www.vwv.co.uk/law-sector/technology-law)



EY's Bristol office services a range of clients across the South West and Wales, from early stage start-ups to listed businesses. Our 380-strong team of technical and industry specialists offer the full suite of financial, tax, and law advisory services and work in integrated teams to help businesses develop their potential. We believe the multidisciplinary EY approach to fast-growing companies is unique, and we have supported a number of businesses across the South West and Wales through our global Entrepreneur of the Year awards.

 [www.ey.com/UK/southwest](http://www.ey.com/UK/southwest)



## Research and Enterprise Development

Research and Enterprise Development at the University of Bristol works with the academic, student and entrepreneur communities to help sustain and grow activities that create the culture, reputation, and impact that define the University of Bristol. We facilitate research and enterprise at all stages of development, working with a broad network of individuals and organisations who help shape and transform our research into real world opportunities.

 [www.bristol.ac.uk/red](http://www.bristol.ac.uk/red)



Corrigan Accountants are a leading provider of accountancy and tax services to the tech sector in Bristol and other clusters around the country. The firm are specialists in business support, financial modelling, R&D tax credits and share incentives as well as offering the full range of tax and accounting services. We apply the latest thinking and digital processes to help support an early stage business all the way through to maturity.

 [www.corrigan.co.uk](http://www.corrigan.co.uk)



The SETsquared Partnership Universities ("SETsquared") **do not** give advice on the risks of investment and are not authorised to carry on investment business under the Financial Services and Markets Act 2000 ('the Act'). Before investing in a project about which information is provided by SETsquared, potential investors are strongly recommended to take advice from a person authorised under the Act who specialises in advising on investments of this nature.